

# Where did the 1998 B.Eng. -Mechanical Engineering (Industrial Automation) graduates go ?

## I. Introduction

The information contained in this paper is extracted from the Graduate Employment Survey of 1998 to answer the following questions about Mechanical Engineering (Industrial Automation) graduates : -

- How were they employed six months after graduation ?
- Of those who pursued further studies, what programmes did they follow ?
- Of those who were employed full-time, how long did it take them to secure their first job offer ?
- In which sectors were they employed ?
- How much did they receive in salary ?
- How many job offers did they receive ?
- Who were their employers and what were their job titles ?

## II. Employment Situation in 1998

Of the 8 respondents who majored in Mechanical Engineering (Industrial Automation), 63% (or 5 graduates) were in full-time employment within six months of graduation. 13% (or 1 graduate) went on for further studies. The remaining 25% (or 2 graduates) were still seeking full-time employment at the time of the survey. (Table 1)

	B.Eng. - Mechanical Engineering (Industrial Automation)				HKU Overall*	
	Total		Male			
	'98		'98		'98	
	No.	%	No.	%	No.	%
<i>No. of respondents</i>	8	100	8	100	2383	100
<i>F/T employed</i>	5	62.5	5	62.5	1701	71.4
<i>P/T employed seeking F/T job</i>	0	0	0	0	94	3.9
<i>Unemployed seeking F/T job</i>	2	25.0	2	25.0	157	6.6
<i>Further studies</i>	1	12.5	1	12.5	413	17.3
<i>Emigration/home country</i>	0	0	0	0	3	0.1
<i>Not seeking F/T job</i>	0	0	0	0	15	0.6

Table 1. Employment situation

\* HKU overall refers to the figure for the total HKU population and includes M.B.,B.S. and B.D.S. graduates.

# Where did the 1998 B.Eng. - Mechanical Engineering (Industrial Automation) graduates go ?

## III. Further Studies

The graduate who pursued postgraduate studies took up a M.Phil. programme in finance. Table 2 shows the academic programme pursued & Table 3 shows the source of finance.

Field of Study	Academic Programme
	M.Phil.
Finance	1

Table 2. Academic programmes

Source of Finance	No. of Graduate
Full Scholarship	1

Table 3. Source of finance for further studies

## IV. Time Taken to Secure Employment

Among those graduates who were in full-time employment, 80% secured their first job offer before the end of August. The figure increased to 100% by the end of September. (Figure 1)

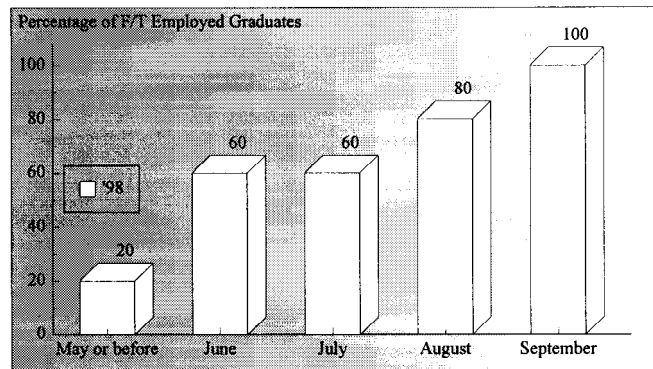


Figure 1. Time taken to secure employment

## V. Employment Sectors

All the Mechanical Engineering (Industrial Automation) graduates were employed in commerce & industry. (Figure 2)

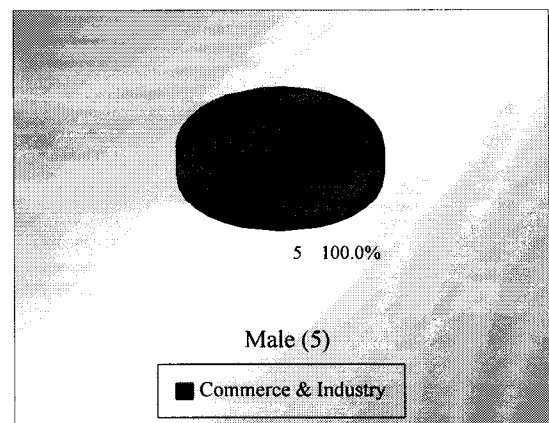


Figure 2. Employment sector by sex

# Where did the 1998 B.Eng. - Mechanical Engineering (Industrial Automation) graduates go ?

## VI. Basic Salary and Gross Income

The remuneration received by the Mechanical Engineering (Industrial Automation) graduates is shown in Table 4.

	<i>Basic Salary</i>		<i>Gross Income</i>	
	<b>B.Eng. - Mechanical Engineering (Industrial Automation)</b>	<b>HKU Average*</b>	<b>B.Eng. - Mechanical Engineering (Industrial Automation)</b>	<b>HKU Average*</b>
	'98	'98	'98	'98
<i>Mean</i>	\$10,500	\$15,496	\$12,625	\$16,557
<i>Median</i>	\$10,000	\$12,300	\$13,000	\$13,325
<i>Minimum</i>	<b>\$9,000</b>	\$1,000	\$10,292	\$5,000
<i>Maximum</i>	\$12,000	\$58,000	\$15,000	\$59,000

Table 4. Basic salary and gross income

\* HKU average refers to the figure for the total HKU population and includes M.B., B.S. and B.D.S. graduates.

## VII. Number of Full-Time Job Offers

Of those in full-time employment, 60% of the graduates had more than one job offer. 40% reported having received three or four job offers. (Figure 3)

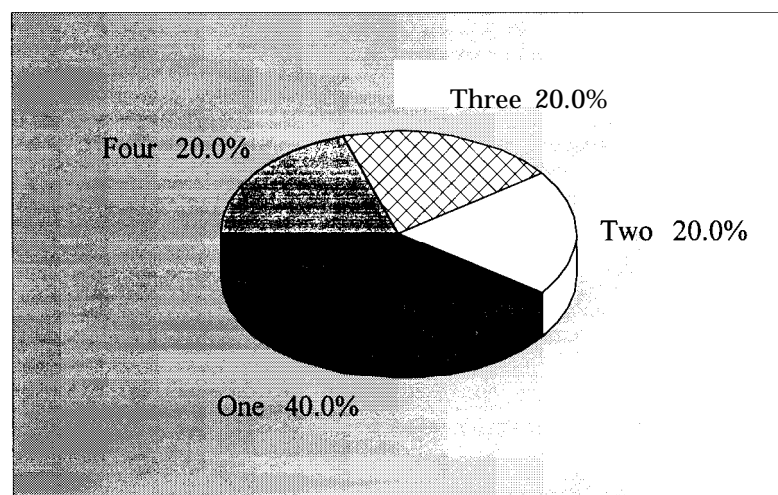


Figure 3. No. of full-time job offers

# ***Where did the 1998 B.Eng. - Mechanical Engineering (Industrial Automation) graduates go ?***

---

## **VIII. Names of Employers and Job Titles**

The job titles of the Mechanical Engineering (Industrial Automation) graduates in full-time employment and the names of their employers are listed below.

<u><b>Employers :</b></u>	<u><b>Job Titles :</b></u>
<b>COMMERCE &amp; INDUSTRY -</b>	
<ul style="list-style-type: none"><li>• I C International Ltd</li><li>• Rototech Rocom Electric Co. Ltd</li><li>• SAFE</li><li>• Tontec Industrial Co.</li><li>• Organization's name not reported</li></ul>	<ul style="list-style-type: none"><li>• Sales/Project Manager</li><li>• Project Engineer</li><li>• Assistant Engineer</li><li>• Project Engineer</li><li>• Assistant Engineer</li></ul>

*Table 5. List of employers and job titles*

Note : Some alumni have indicated willingness to talk to individual students about their work. Their contact telephone number can be obtained from counsellors at CEPC.

## **IX.** Similar information on graduates from other disciplines of study is available for reference in the Careers Library. Please enquire with the CEPC.

Careers Education and Placement Centre  
3/F Wong Chuang Lai Wah Building  
Meng Wah Complex  
The University of Hong Kong  
Pokfulam Road  
Hong Kong

Telephone : 28592314  
Fax : 2559 5238  
E-Mail : CEPC@HKUCC.HKU.HK  
Homepage : <http://www.hku.hk/cepc>

Opening Hours : Monday - Friday (9:00 a.m. to 5:30 p.m.)  
Saturday (9:00 a.m. to 12:00 p.m.)

Cindy Chan

August, 1999

The analysis is based on information provided by the respondents, and the Careers Education & Placement Centre should not be held responsible for any errors arising therefrom.

No part of this report may be reproduced in any form or by whatever means, without written permission from the Director of the Careers Education and Placement Centre, The University of Hong Kong